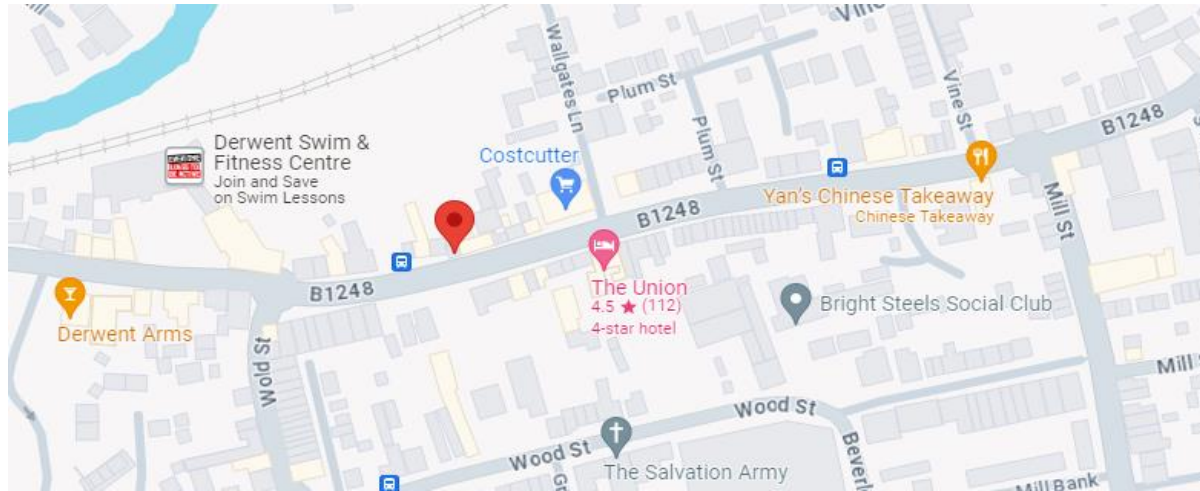


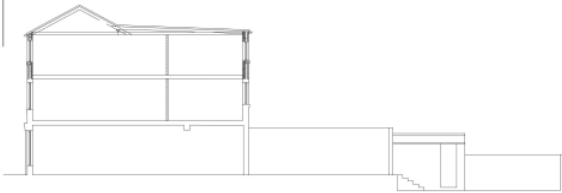
Norton Planning Addition – May 2024

ZE24/00465/FUL | Change of Use from cafe to restaurant with revised opening hours to include replacement roof to single storey rear extension and formation of a raised decking area | 37 Commercial Street Norton Malton North Yorkshire YO17 9HX



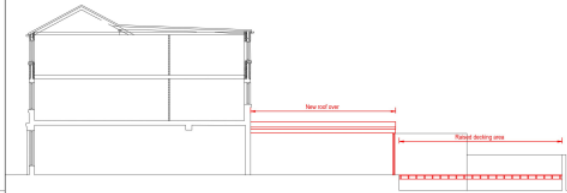


existing

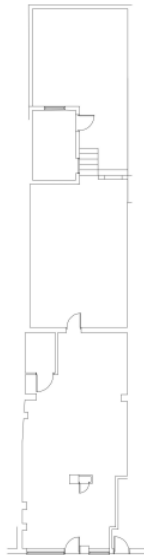


Typical Section - 1:100

proposed



Typical Section - 1:100



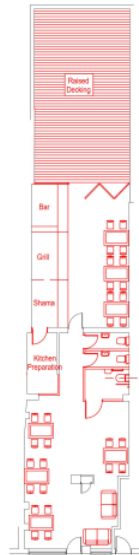
Ground Floor Plan - 1:100



Front Elevation - 1:100



Rear Elevation - 1:100



Ground Floor Plan - 1:100



Front Elevation - 1:100



Rear Elevation - 1:100



Site Location Plan - 1:500

ioana Aninaru	
37 Commercial Street, Norton, Malton, YO17 9HX	
Proposed change of use to restaurant	
02/05/2024	
As shown	
NMB/37CS/001	

Please add details of the Use Classes and floorspace.

Use Class:

E(a) - Display/Sale of goods other than hot food

Existing gross internal floorspace (square metres) (a):

122

Gross internal floorspace to be lost by change of use or demolition (square metres) (b):

10

Total gross new internal floorspace proposed (including changes of use) (square metres) (c):

112

Net additional gross internal floorspace following development (square metres) (d = c - a):

-10

Totals	Existing gross internal floorspace (square metres) (a)	Gross internal floorspace to be lost by change of use or demolition (square metres) (b)	Total gross new internal floorspace proposed (including changes of use) (square metres) (c)	Net additional gross internal floorspace following development (square metres) (d = c - a)
	122	10	112	-10

Tradable floor area

Does the proposal include use as a shop (e.g. For the display/sale of goods under Use Class E(a), the sale of essential goods under Use Class F2, or as part of any other use)

Yes

No